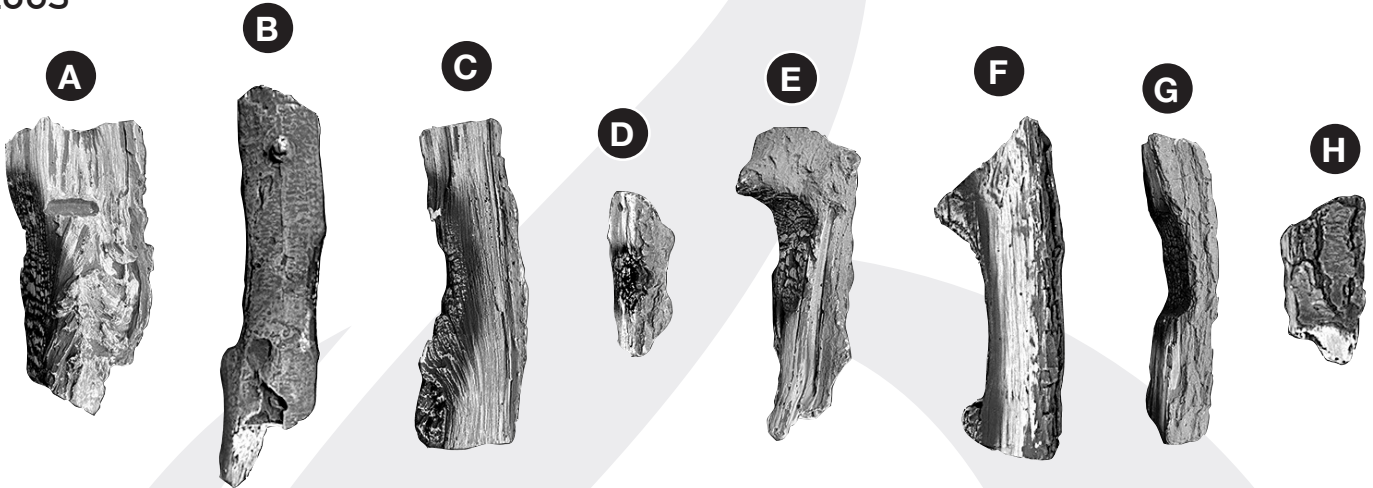


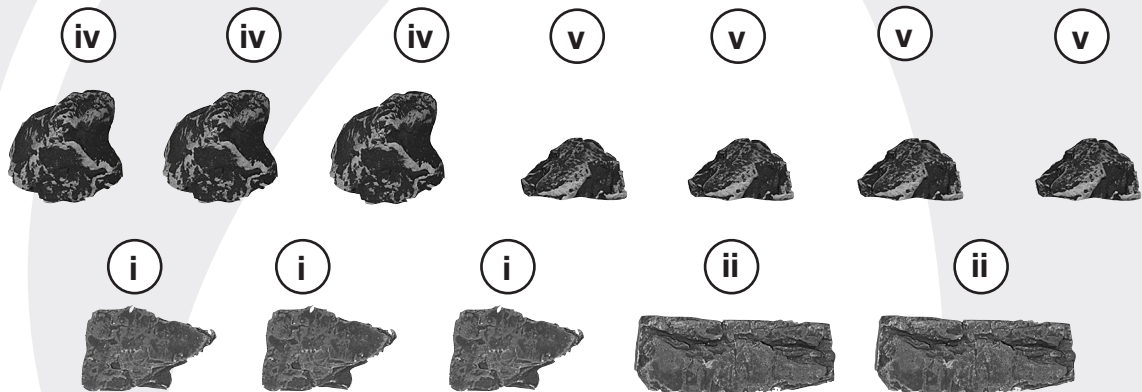


## Avanti 85 Conventional Flue

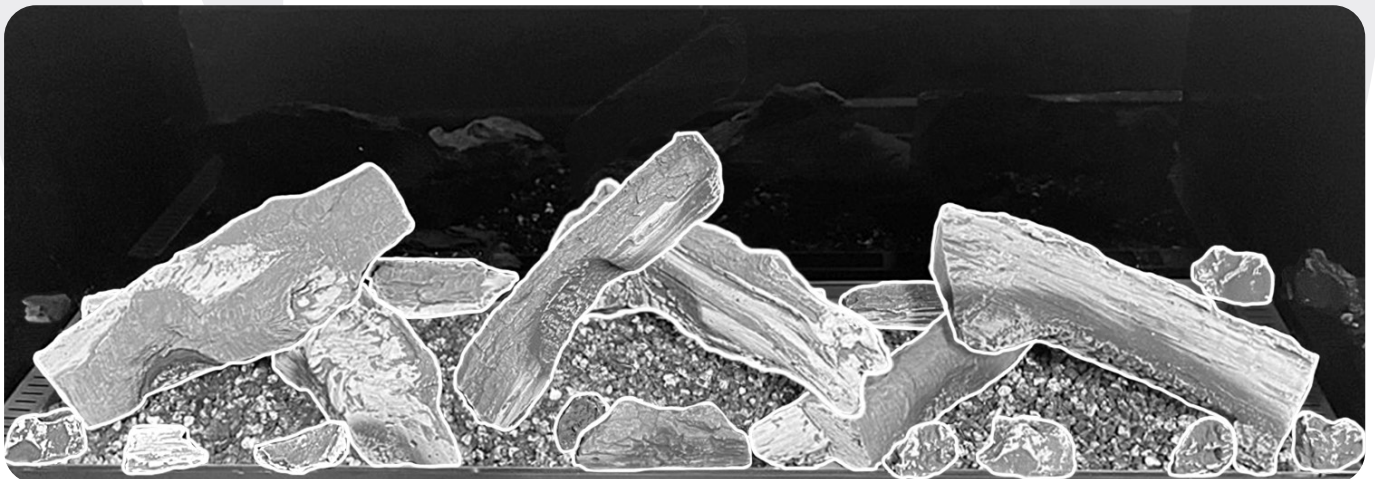
### LOGS



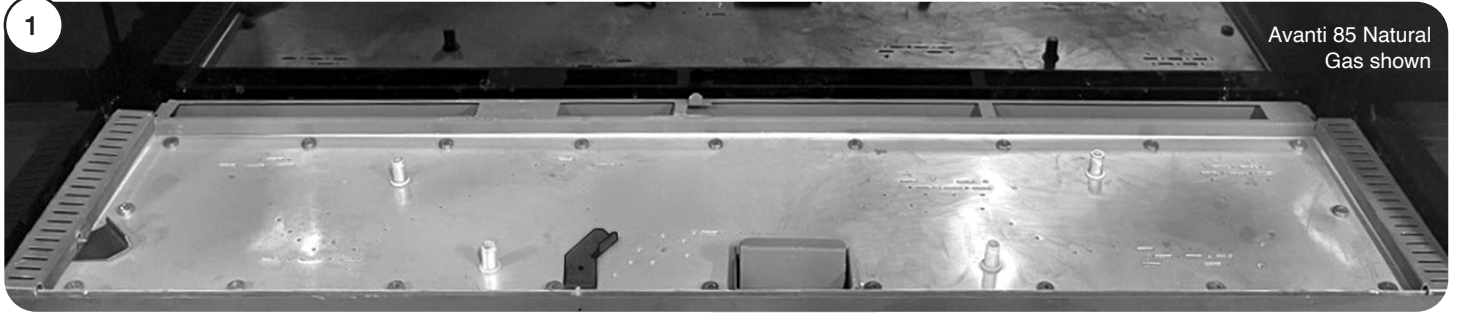
### EMBERS



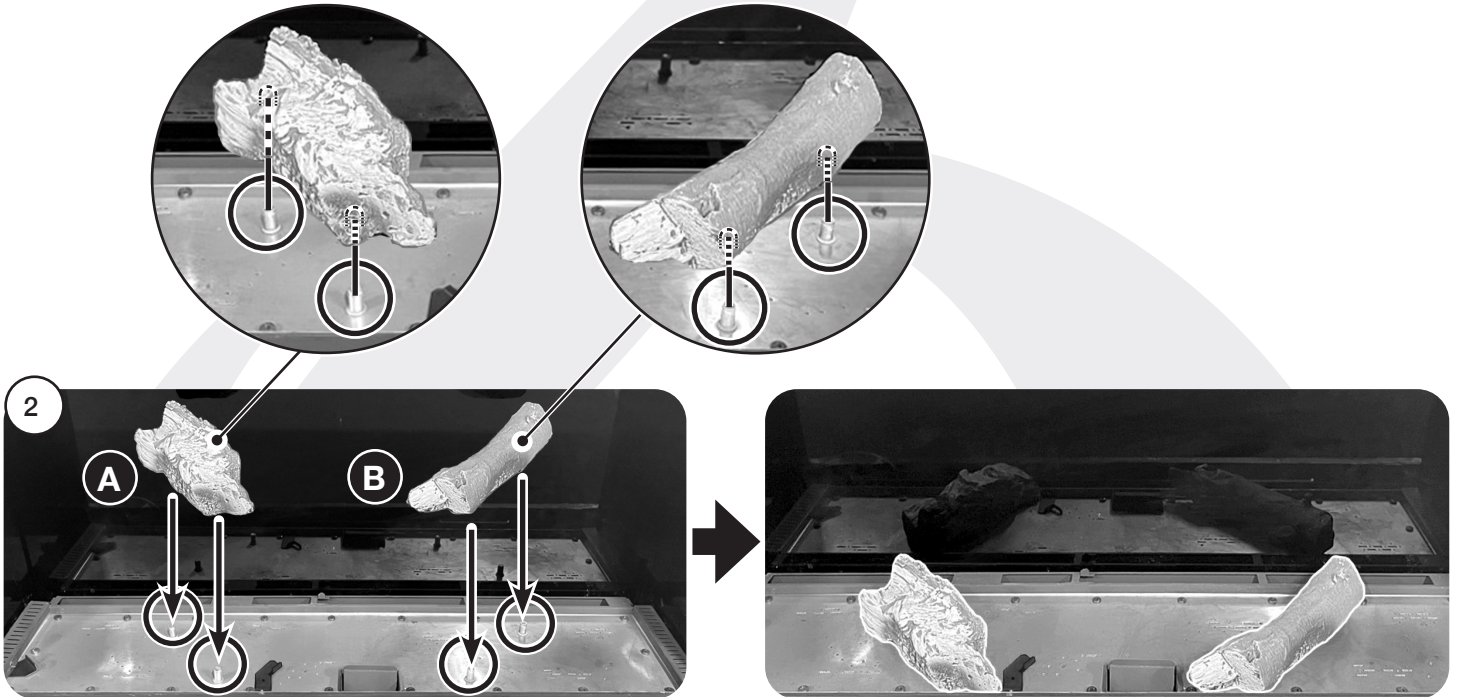
### COMPLETE SET



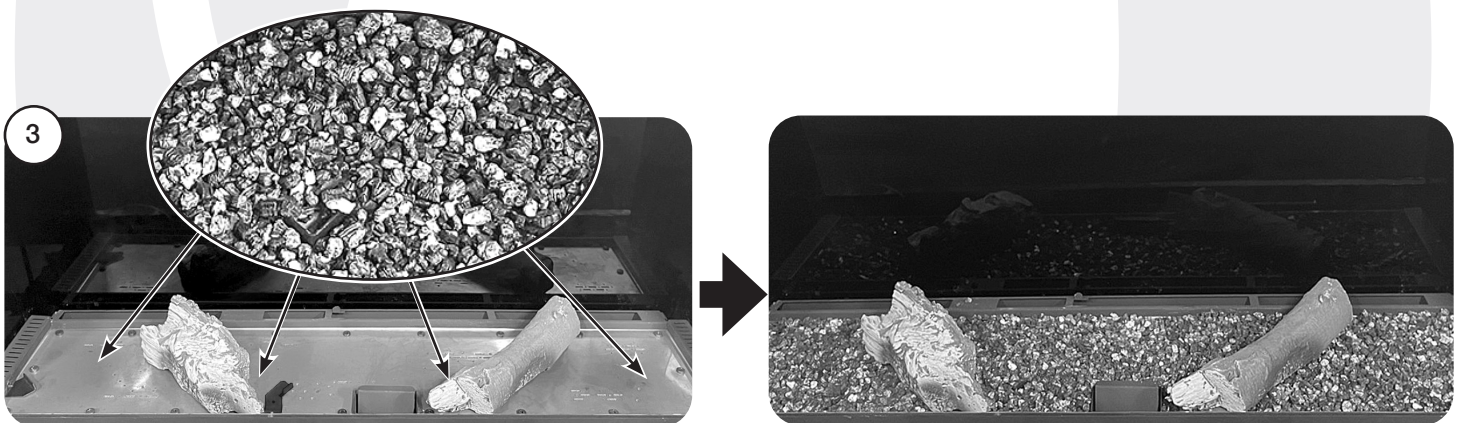
## LOG LAYOUT INSTRUCTIONS



Place Log A and Log B in position on the locating pins, as shown in diagram 2.

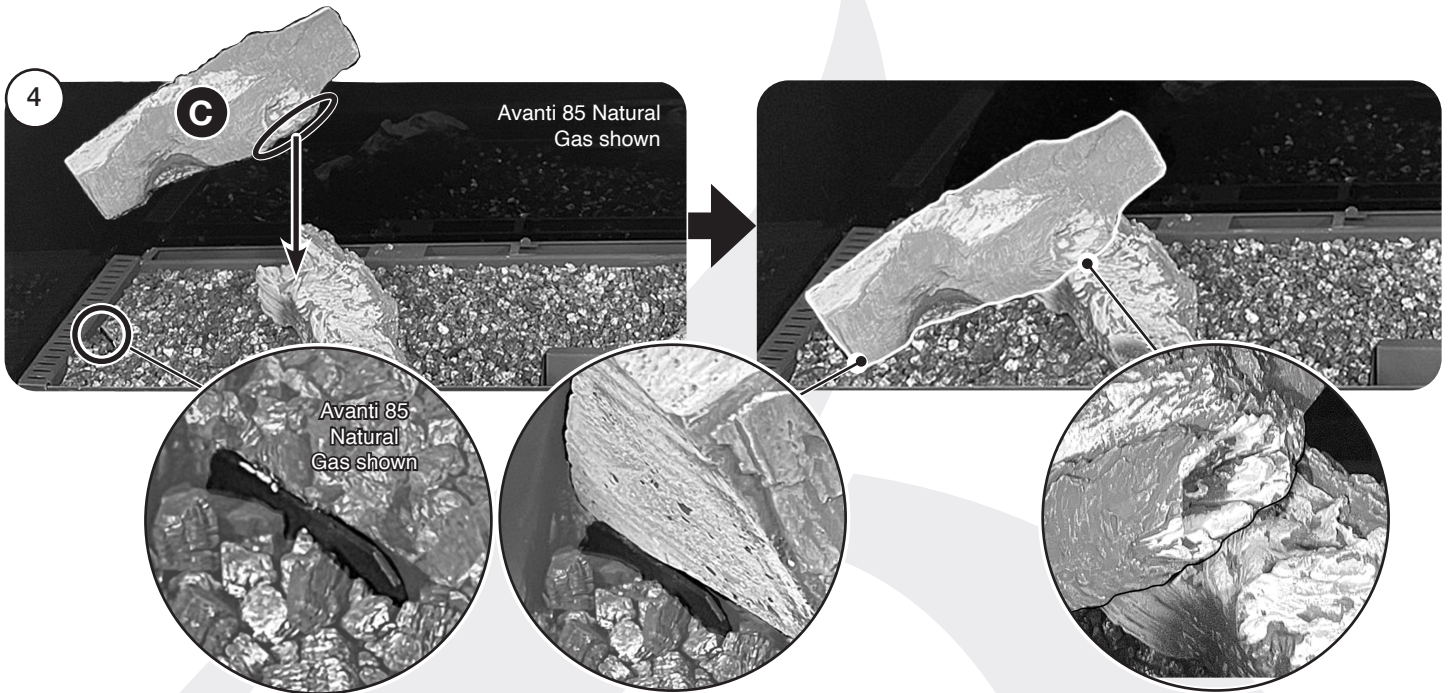


Use all the vermiculite to fill the burner tray and spread evenly across the whole burner.





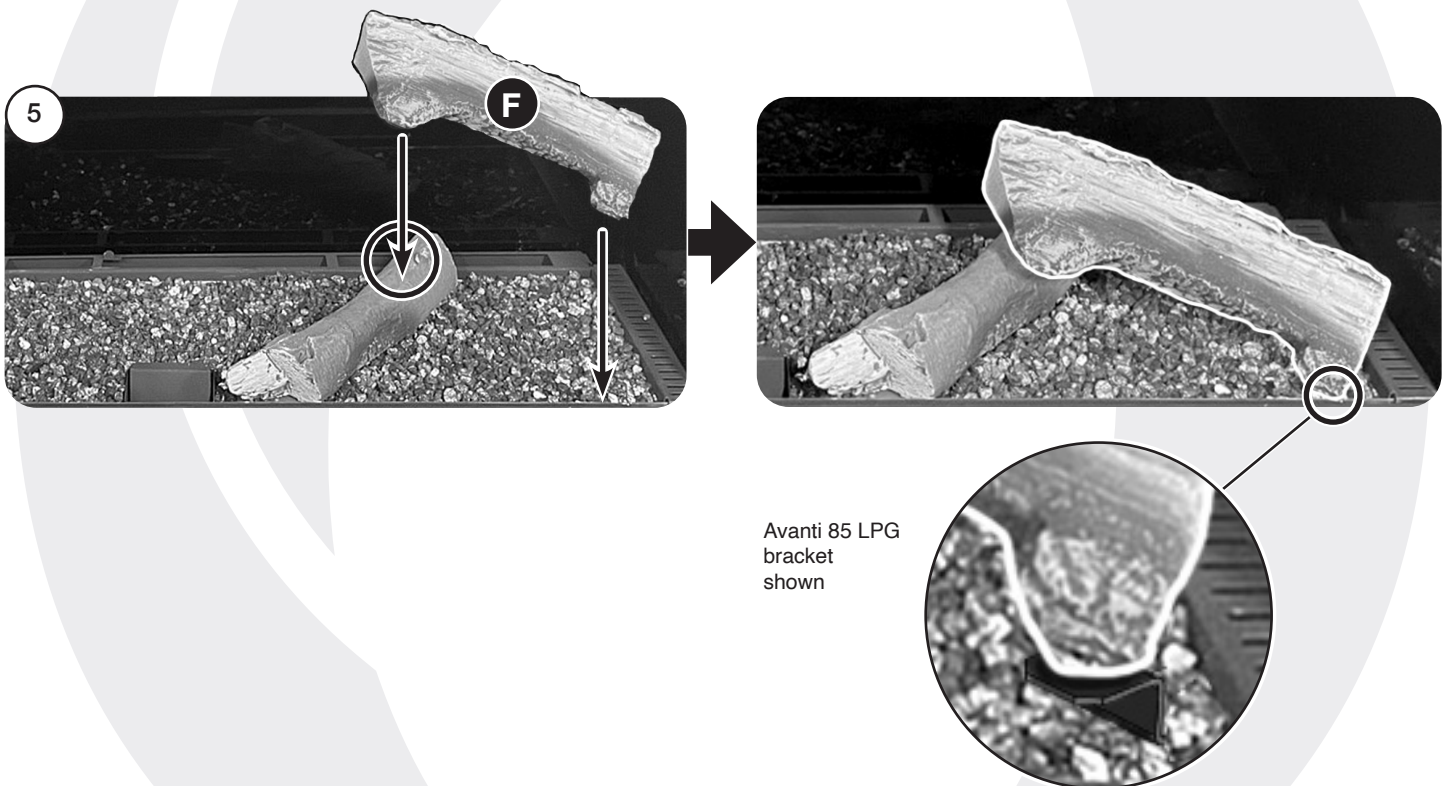
Place the protruding edge on Log C in the groove on Log A with the left end resting on the bracket, in the position shown in diagram 4.

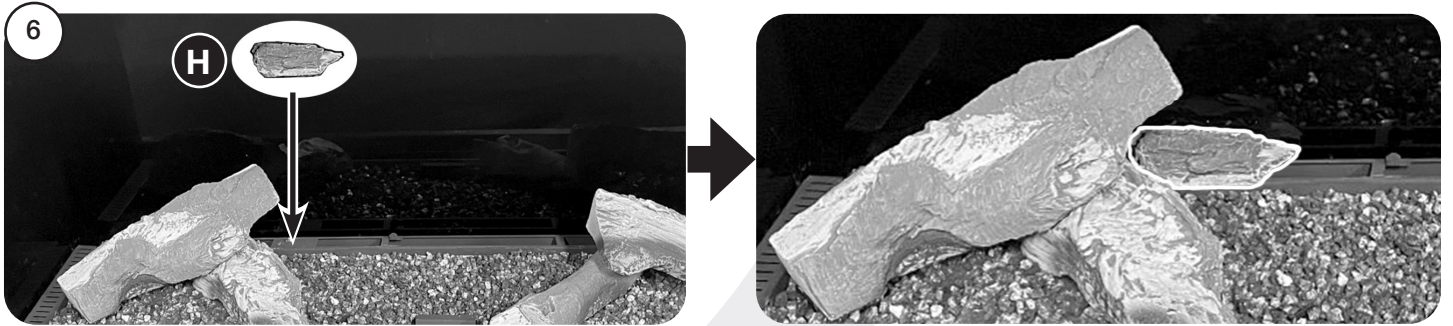


There is a hole on the underside of Log F that fits over the raised stud on Log B to secure in place.

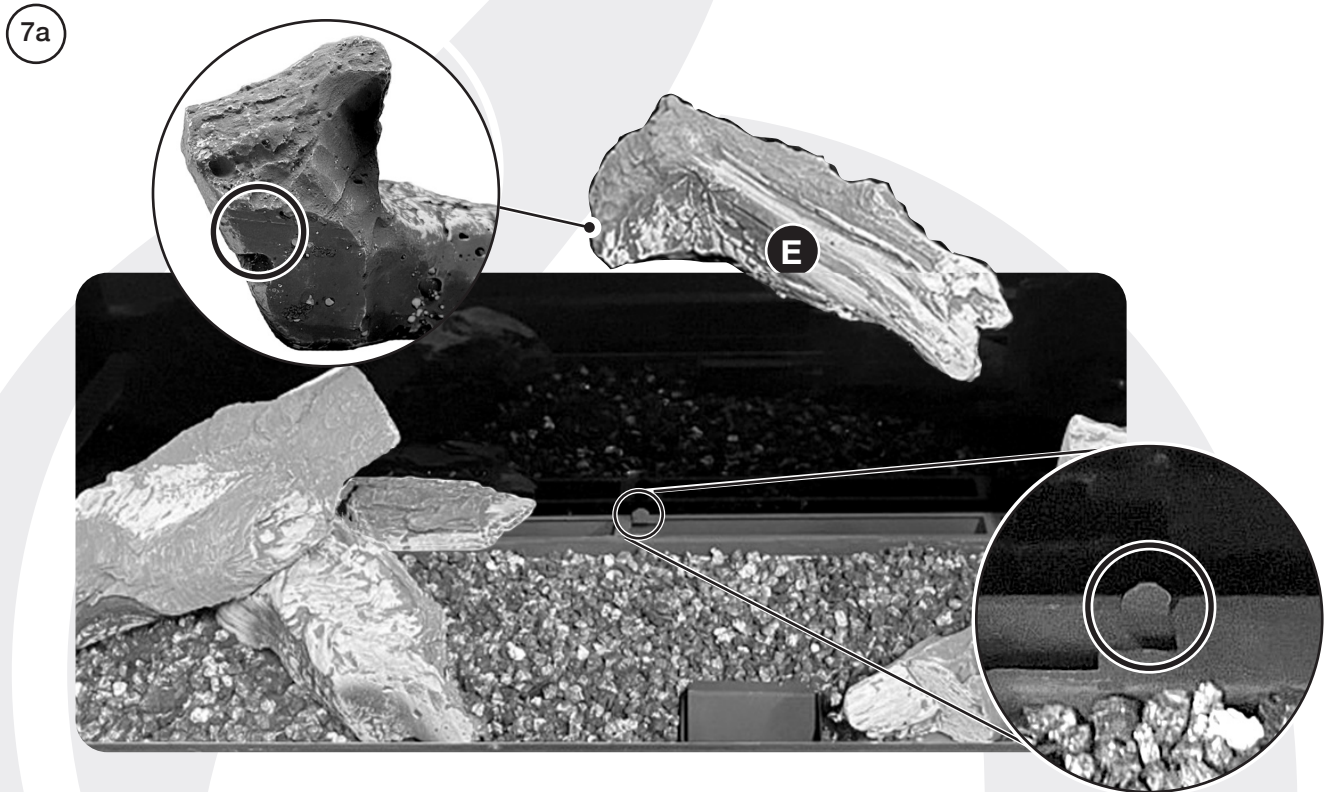
Natural Gas: The right hand side of the log rests against the front edge of the Burner Tray.

LPG: The right hand side of the log rests on the bracket against the edge of the front tray.

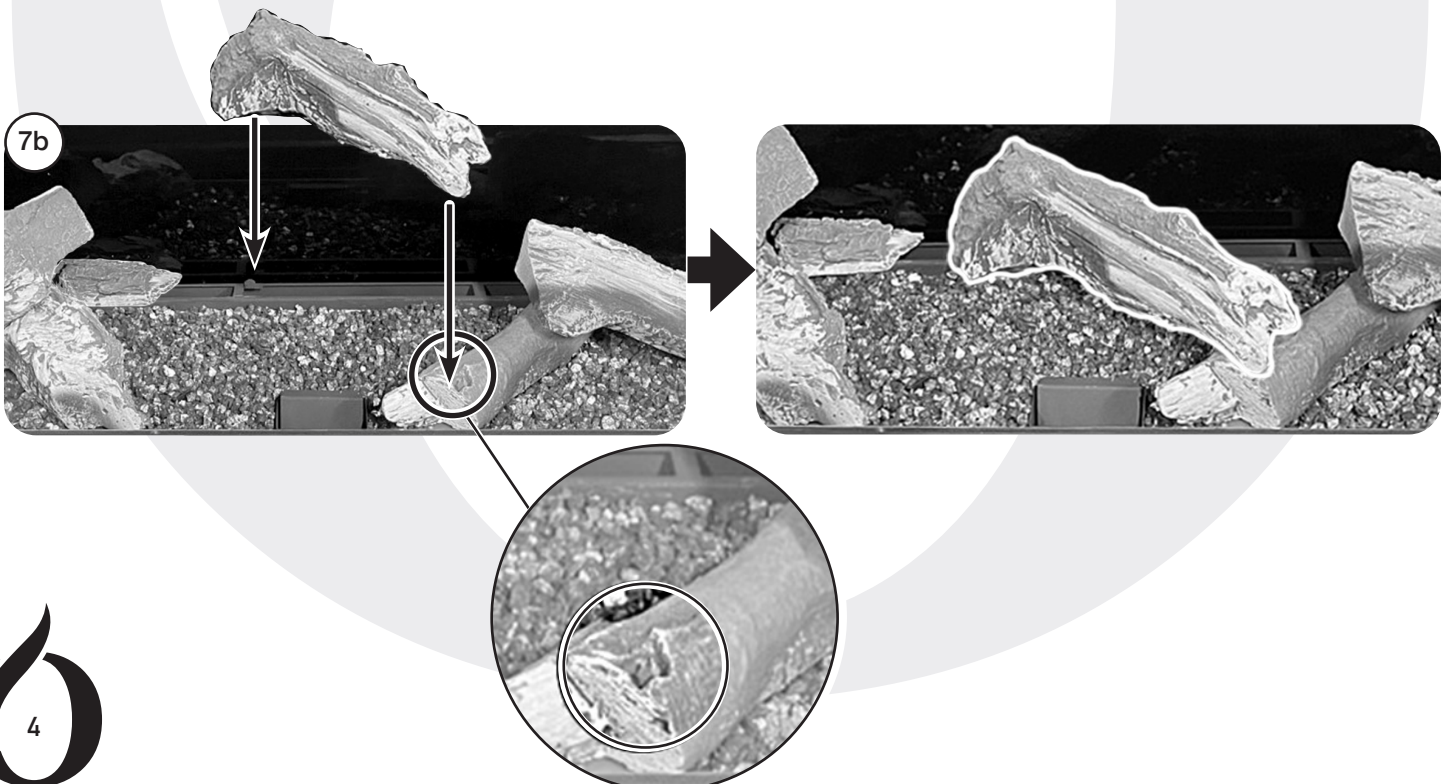




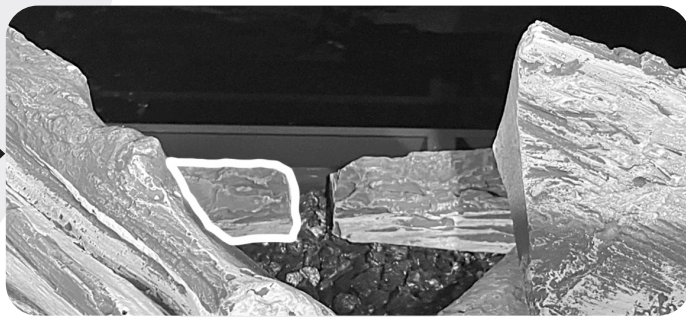
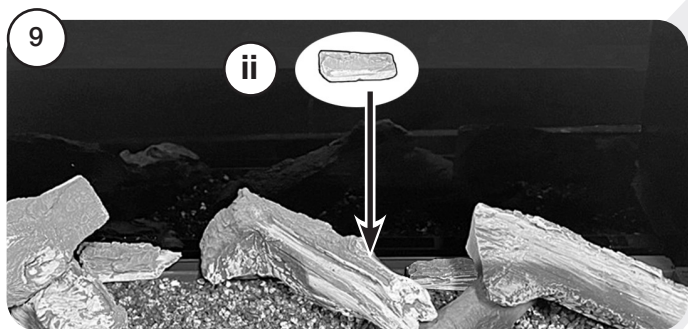
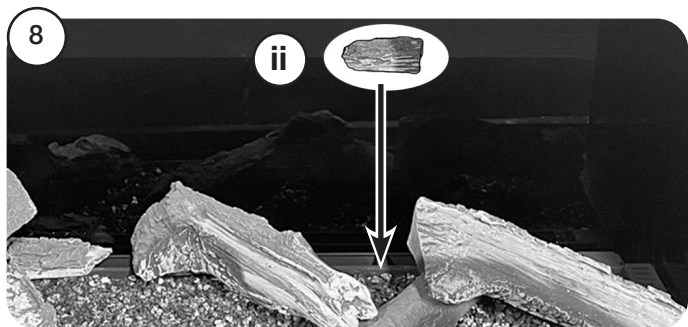
Fit the tab on the rear trim onto the cutout on the left end of Log E.



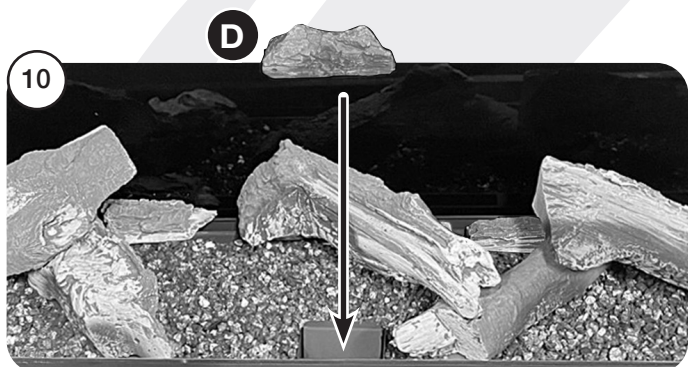
The right end of Log E rests on the cutout on Log B.



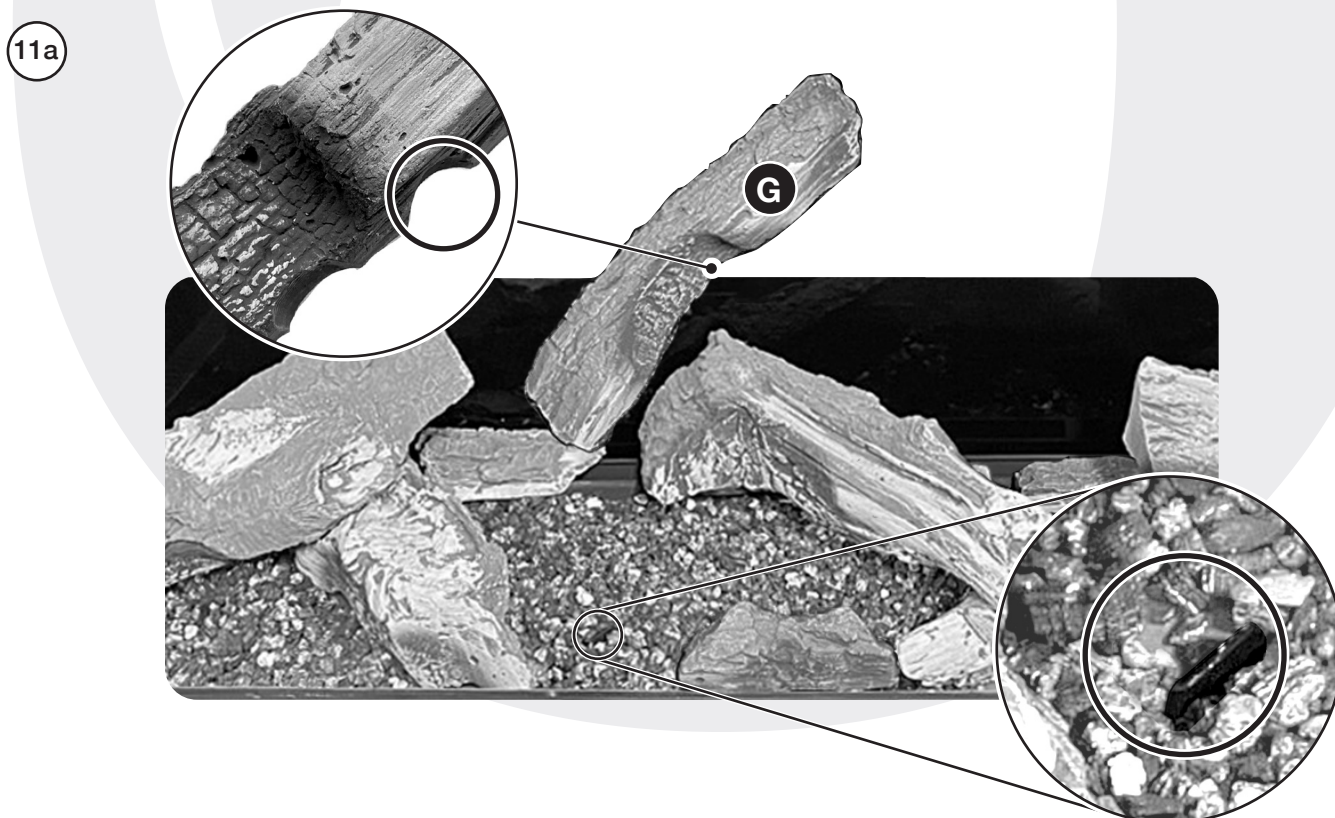




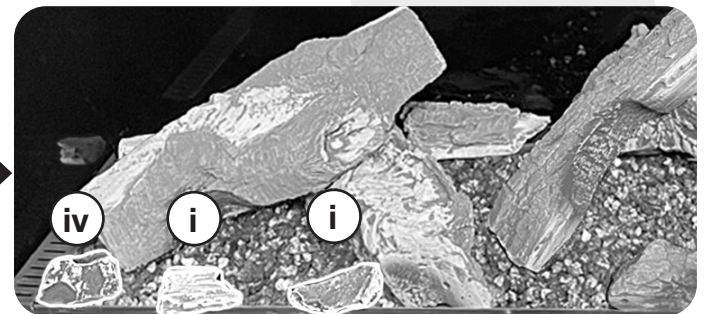
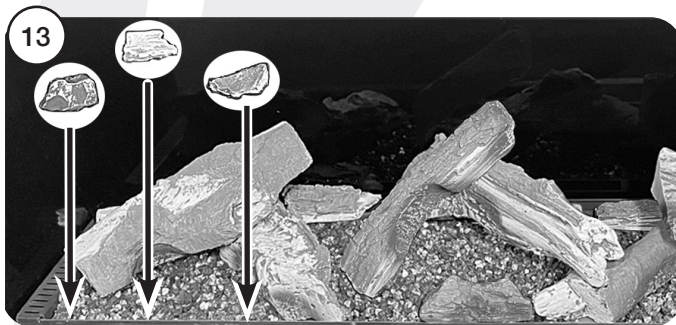
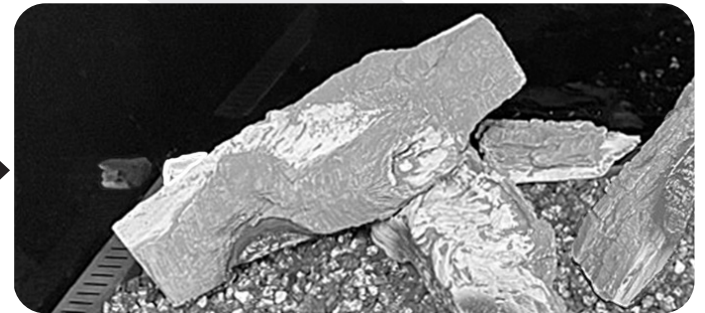
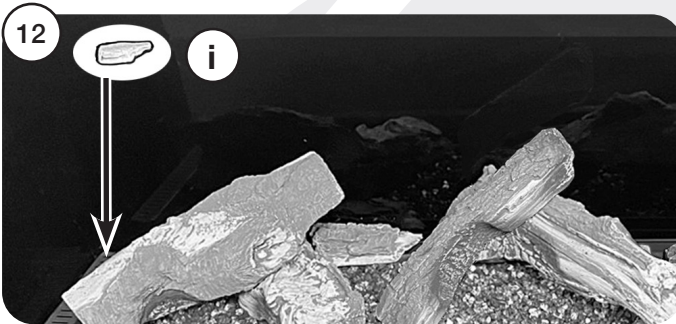
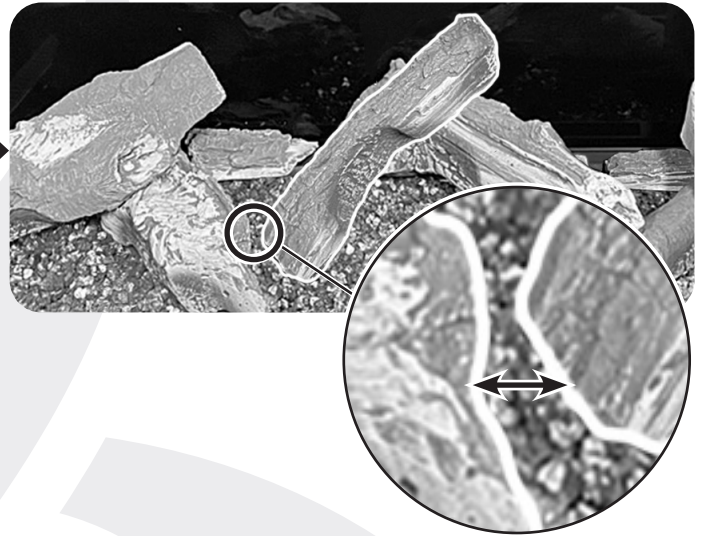
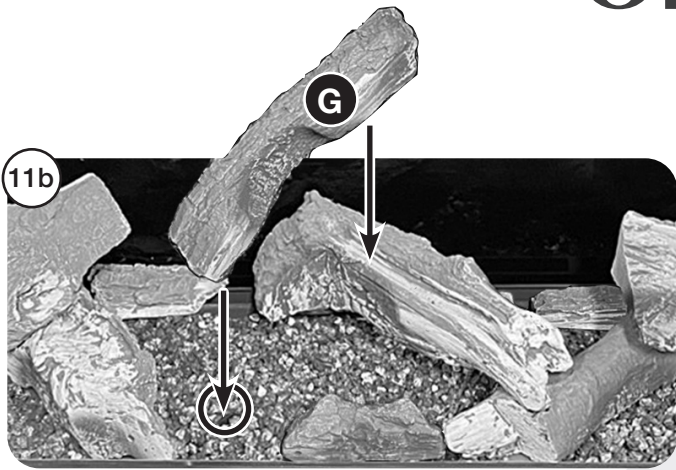
The flat edge of Log D rests against the Pilot Shield.



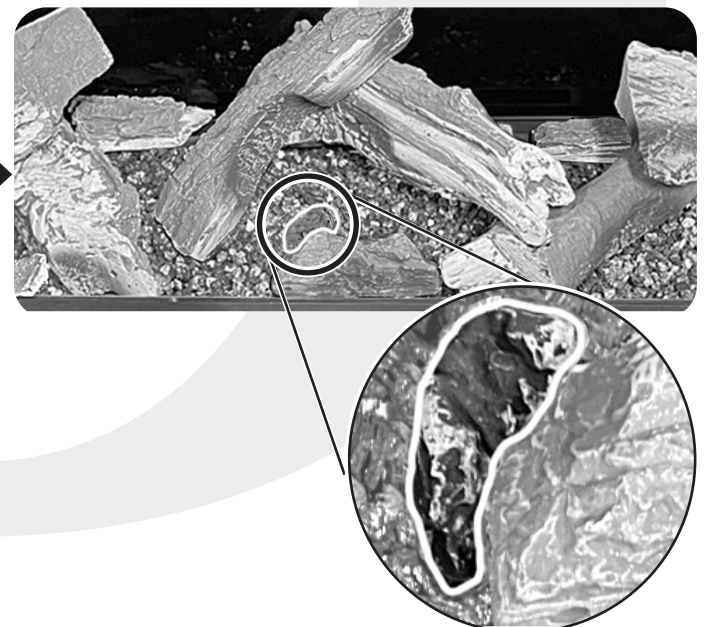
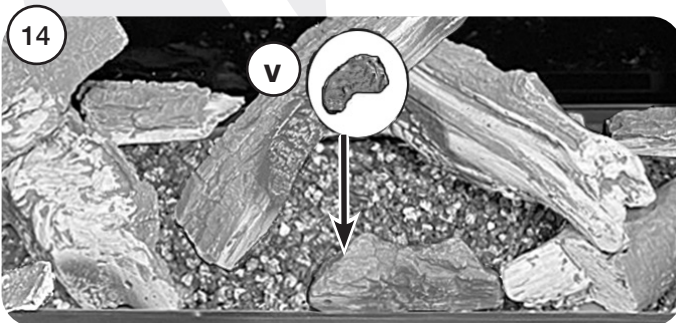
Place the cutout of Log G on top of Log E with the left end resting on the bracket and leaving a gap between Log G and Log A , in the position shown in diagrams 11a & 11b.



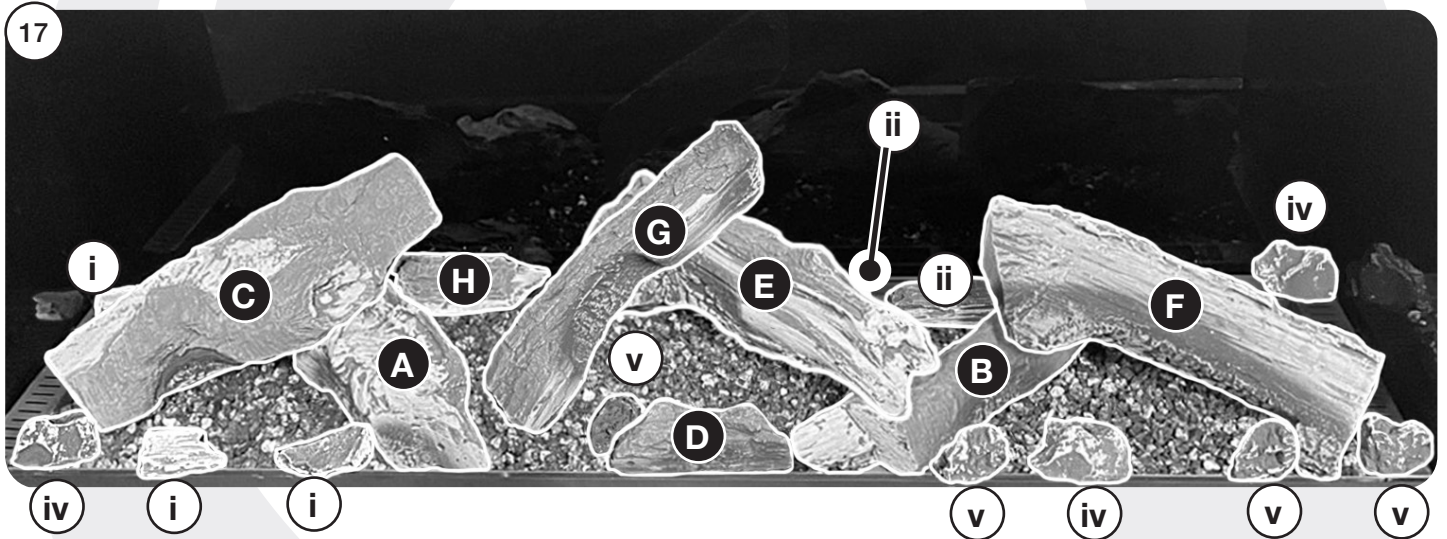
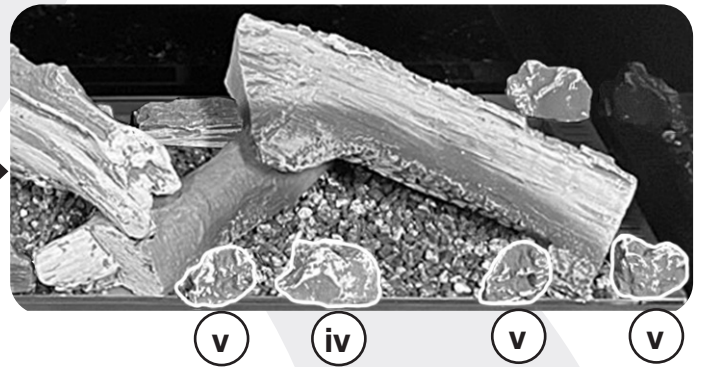
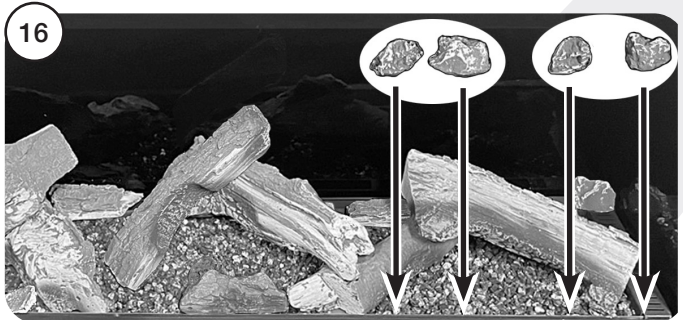
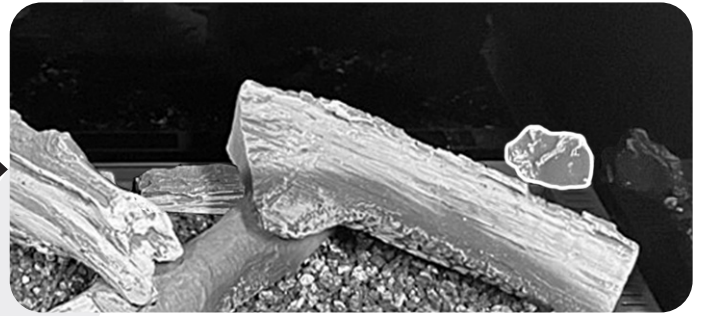
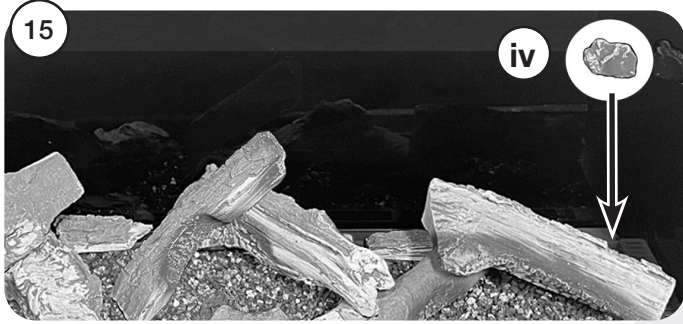




Position Ember v behind Log D as shown in diagram 14.





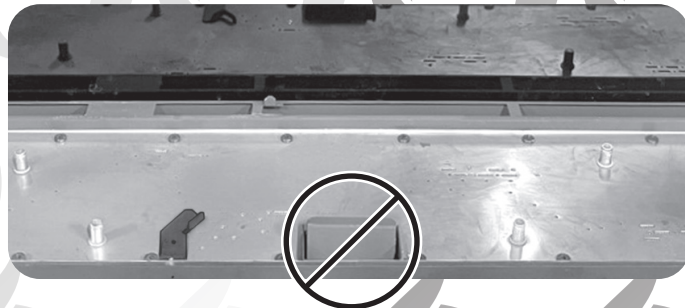


# Embaglow



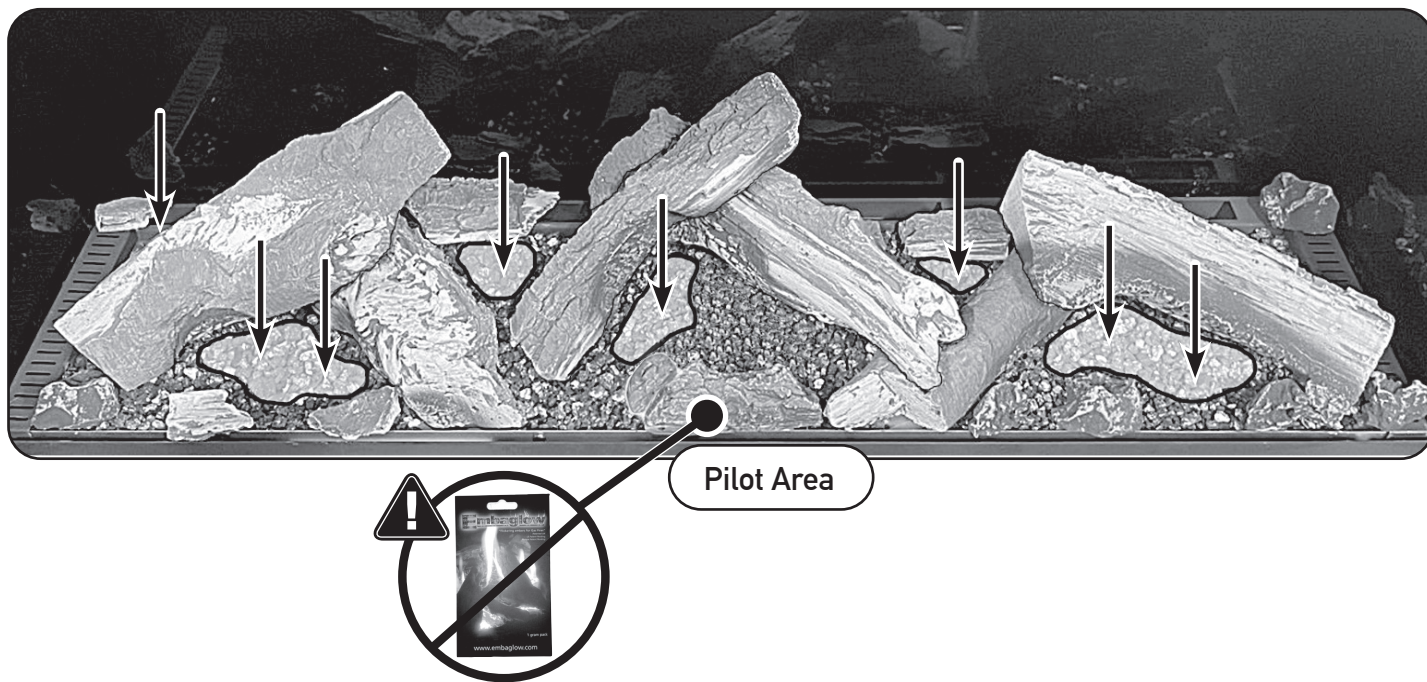
**WARNING- DO NOT PLACE  
NEAR THE PILOT AREA.**

Do not place Embaglow in the area around the pilot burner - see highlighted example on diagram as this may effect the ignition process and flame picture.



**IT MAY NOT BE NECESSARY TO USE ALL THE EMBAGLOW IN THIS PACK.**

Sparingly spread an amount of the fibres provided on the sections highlighted in the instructions. Take care not to use more than specified in the instructions.



**FOR ENQUIRIES IN THE U.K (EXCLUDING NI):**

Gazco Limited, Spitfire Avenue, Skypark, Clyst Honiton, Exeter, Devon, England EX5 2FR

Tel: (01392) 474011 E-mail: [info@onyxfires.com](mailto:info@onyxfires.com)

**FOR ENQUIRIES IN EUROPE (INCLUDING NI):**

Stovax Heating Group (NI) Ltd (Comp reg NI675194), 40 Linenhall Street, Belfast, BT2

8BA DX 400 NR Belfast Tel: +44 (0)1392 261990 E-mail: [northernireland@onyxfires.com](mailto:northernireland@onyxfires.com)

# onyx



PR3145

E & O E